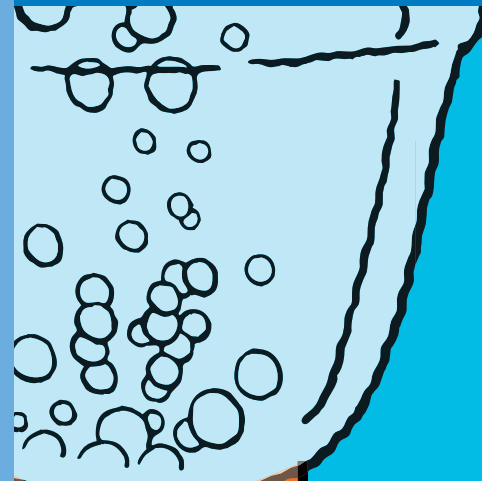


MetLife Auto & Home®

**MetLife**

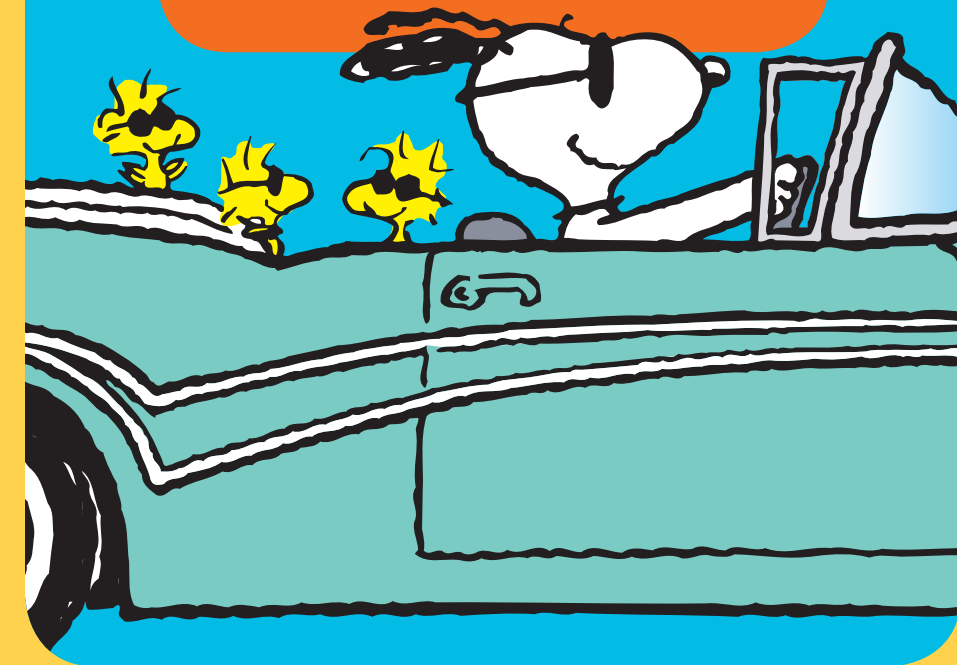
Make the  
**MOST**  
of Your  
**WORKPLACE**  
**BENEFITS**  
with  
**METLIFE AUTO & HOME**



## You Value Your **WORKPLACE** **BENEFITS** Program

Your benefits are important to you...they offer you choice and convenience, they can save time, help minimize cost and they can also help to protect you and your family.

Take advantage of ALL your company benefits, and start saving today with special auto and home\* group discounts!



**1 800 GET-MET 8 (1-800-438-6388)**

\* Home insurance is not part of MetLife Auto & Home's benefit offering in Florida.

\*\* Use of credit/debit card is optional. The same insurance is available regardless of the method of payment. Payments may be made by cash, check or by credit/debit card. Reward points are not underwritten or funded by MetLife Auto & Home.

† MetLife Auto & Home internal research (2011) based on market share data from A.M. Best Company.

# MetLife

**MetLife Auto & Home**  
700 Quaker Lane, PO Box 350  
Warwick, RI 02887  
[www.metlife.com](http://www.metlife.com)

MetLife Auto & Home is a brand of Metropolitan Property and Casualty Insurance Company and its affiliates: Metropolitan Casualty Insurance Company, Metropolitan Direct Property and Casualty Insurance Company, Metropolitan General Insurance Company, Metropolitan Group Property and Casualty Insurance Company and Metropolitan Lloyds Insurance Company of Texas, all with administrative home offices in Warwick, RI. Coverage, rates and discounts are available in most states to those who qualify.

1201-0158 1900031883(0312)  
© 2012 MetLife Auto & Home L0312244838[exp0513][xMA]  
PEANUTS © 2012 Peanuts Worldwide

## MAXIMIZING YOUR BENEFITS... See what MetLife Auto & Home Can Offer

As part of your workplace benefits program, you could receive hundreds of dollars in savings, combined with special group discounts on auto and home insurance:

- Save up to an additional 10% right away with our **Welcome Discount for NEW customers**
- Qualify for a group discount of up to 15% off your policy.
- Save more with our superior driver discount
- Receive extra savings if you've been with your company for a long time
- Make the most of our multi-policy discounts when you insure both your home and auto with MetLife Auto & Home.

## Payment Options that MAKE IT EASIER!

We offer a variety of flexible and convenient payment options to make paying for your insurance easier:

- Choose an automated payment option and receive an added savings
- Select direct billing as your preferred payment option, or
- Use your favorite credit card and you may earn valuable membership reward points\*\*

## COVERAGE SOLUTIONS for Your Diverse Insurance Needs

In addition to auto and homeowners, we offer a variety of other insurance policies including:

- **Personal Excess Liability**
- **Boat**
- **Condo**
- **Renter's**
- **Motor Home**
- **Motorcycle**
- **Recreational Vehicle**



## Wait...There's MORE!

Coverage is 100% portable, so even if you change jobs you can take your policy with you. With MetLife Auto & Home you may apply for coverage at any time, so we'll help you make the switch quickly and easily.



## WHY MetLife Auto & Home?

As the leading provider of employer-sponsored group property and casualty insurance,<sup>†</sup> MetLife Auto & Home makes it easier by working with your company to provide you with special savings, outstanding customer service and a full suite of products to meet your diverse insurance needs. See how simple it is to switch.

**CALL US TODAY for free quotes.**

**1 800 GET-MET 8 (1-800-438-6388)**

**1 800 GET-MET 8 (1-800-438-6388)**